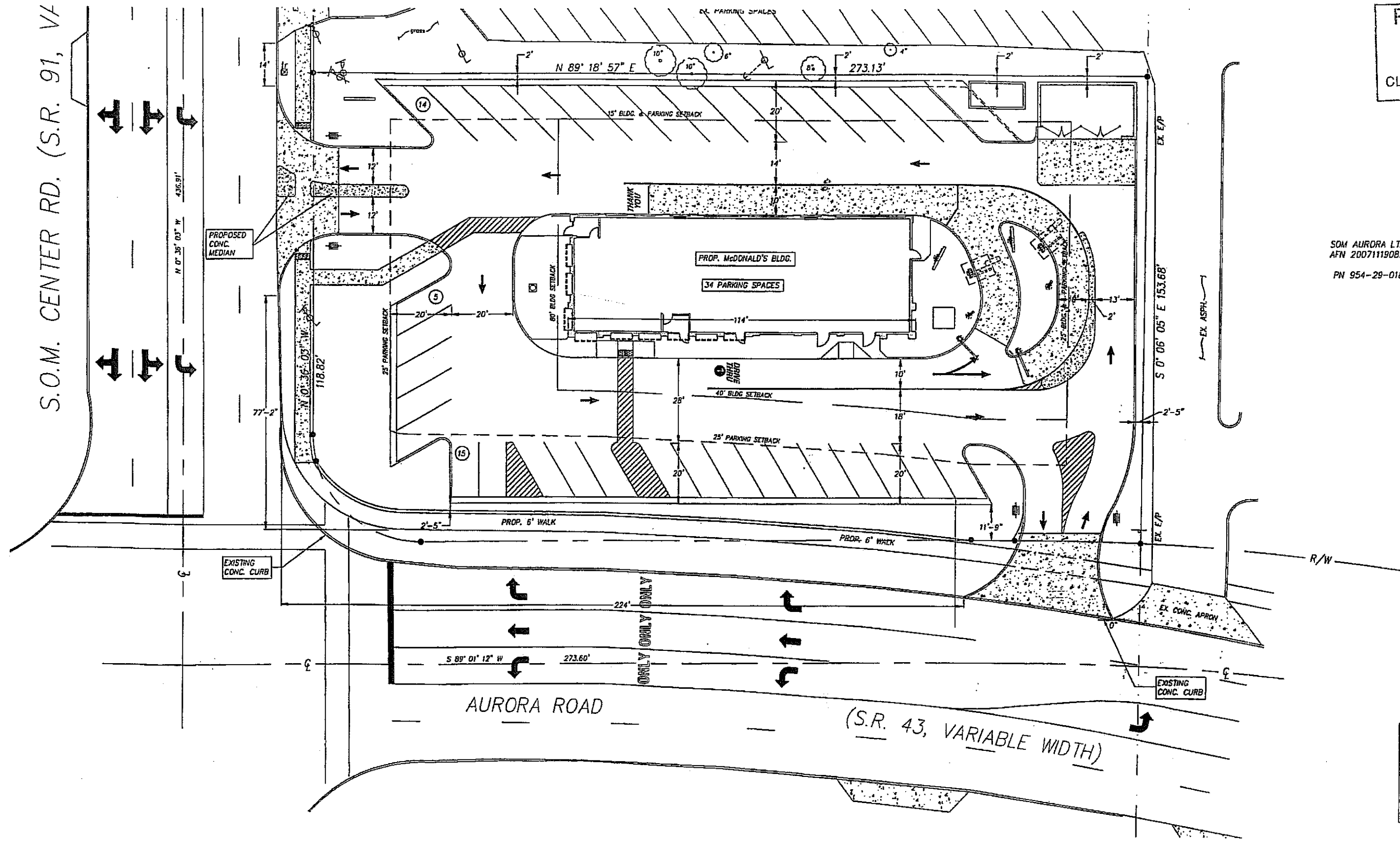


S.O.M. CENTER RD. (S.R. 91, V/F)



RECEIVED
 OCT 28 2010
 CLERK OF COUNCIL
 CITY OF SOLON

SOM AURORA LTD.
 AFN 200711190821
 PN 954-29-018

LOT LIGHTING RECORD

SUPPLIER: SECURITY LIGHTING SYSTEMS, INC.
 1083 JOHNSON DRIVE
 BUFFALO GROVE, IL 60089 (800) 544-

PARKING INFO.

TOTAL SPACES	16	SPA
	2	SPA
	14	SPA
	(H/C) 2	SPA
*35 FUTURE	1	FUTURE SI

PRESENT & PROPOSED ZONING OF
 "C-3" COMMERCIAL

PARKING REQUIREMENTS

A MINIMUM OF (1) ONE PARKING FIFTY SQUARE FEET OF FLOOR AREA FOR OUTDOOR SEATING, OR (1) ONE EACH (2) TWO SEATS SHALL BE CALCULATION METHOD RESULTS II OF REQUIRED PARKING SPACES S

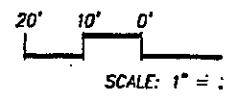
BUILDING GROSS SQUARE FOOTAGE (4,056 / 50 = 81.16)

NUMBER OF PROPOSED SEATS - (75 SEATS / 2 = 37.5)

NUMBER OF PARKING SPACES REQUIRED

NUMBER OF PARKING SPACES PROVIDED

(2) SPACES ADDED IN FUTURE

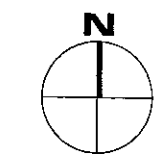


PROPOSED
 RIGHT TURN LANE

RECEIVED
 OCT 27 2010
 PLANNING DEPARTMENT
 CITY OF SOLON

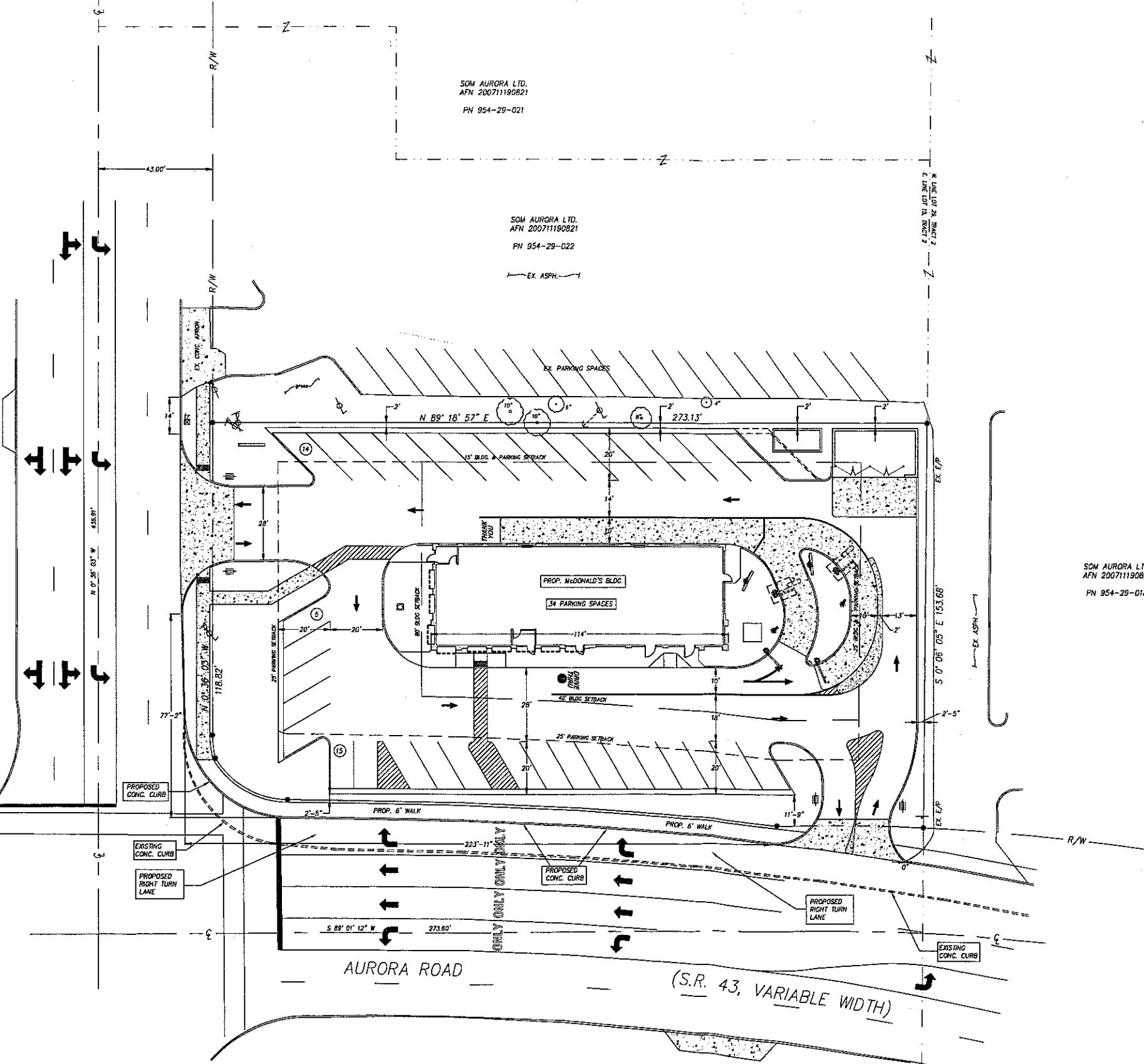
26OCT10

Rec. 10-26-10



BASIS OF BEARING:
BASIS OF BEARING IS STATE PLANE GRID NORTH,
NAD 83 (NRS 2007), OHIO NORTH ZONE.
ELEVATIONS ARE NAVD 88.

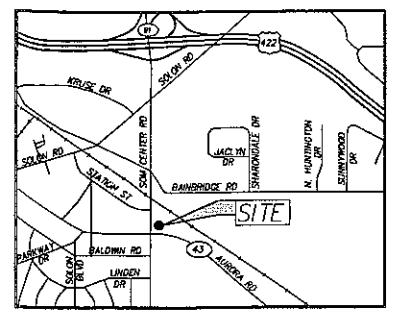
S.O.M. CENTER RD. (S.R. 91, VARIABLE WIDTH)



SOM AURORA LTD.
AFN 200711190821
PN 954-29-021

SOM AURORA LTD.
AFN 200711190821
PN 954-29-022

SOM AURORA LTD.
AFN 200711190821
PN 954-29-018



LOCATION MAP
NO SCALE

LOT LIGHTING RECOMMENDATION

SUPPLIER:
SECURITY LIGHTING SYSTEMS, INC.
1505 JOHNSON DRIVE
BUFFALO GROVE, IL 60089 (708) 544-4848

PARKING INFORMATION

TOTAL SPACES	SPACES	SPACES	SPACES
34*	16 SPACES 9' x 18' @ 90°	2 SPACES 9' x 18' @ 90°	14 SPACES 9' x 18' @ 45°
(N/C) 2	SPACES 9' x 18' @ 90°		
35 FUTURE	1 FUTURE SPACES 9' x 18' @ 45°		

PRESENT & PROPOSED ZONING CLASSIFICATION -
"C-3" COMMERCIAL

PARKING REQUIREMENTS

A MINIMUM OF (1) ONE PARKING SPACE PER EACH (50) FIFTY SQUARE FEET OF FLOOR AREA, INCLUDING AREAS FOR OUTDOOR SEATING, OR (1) ONE PARKING SPACE PER EACH (2) TWO SEATS SHALL BE PROVIDED, WHICHEVER CALCULATION METHOD RESULTS IN THE GREATEST NUMBER OF REQUIRED PARKING SPACES SHALL APPLY.

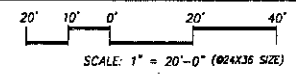
BUILDING GROSS SQUARE FOOTAGE - 4,058 S.F.
(4,058 / 50 = 81.16)

NUMBER OF PROPOSED SEATS - 75 SEATS
(75 SEATS / 2 = 37.5)

NUMBER OF PARKING SPACES REQUIRED = 82 SPACES

NUMBER OF PARKING SPACES PROVIDED = 34 SPACES

(2) SPACES ADDED IN FUTURE = 35 SPACES



PROPOSED B
RIGHT TURN LANE

260CT10

REV	DATE	DESCRIPTION	BY
1			
2			
3			
4			
5			
6			
7			
8			
9			
10			

GLAS PYLE EDWARDS
ARCHITECTS INC.

GPD ASSOCIATES
1801 Westwood Dr., Suite 100, Columbus, Ohio 43219
614-210-0751 / Fax 614-210-0752

SiteSource Consultants, Inc.

LIC # 34-1918

McDonald's

THESE PLANS AND SPECIFICATIONS ARE THE PROPERTY OF MCDONALD'S CORPORATION AND SHALL NOT BE REPRODUCED WITHOUT THEIR WRITTEN PERMISSION.

PROPOSED MCDONALD'S RESTAURANT AT:
S.O.M. CENTER ROAD
SOLOON, OHIO

JOB NO. SS009-503
DATE: OCTOBER 2010
SCALE: 1" = 20'-0"
SITE PLAN
SHEET: C1